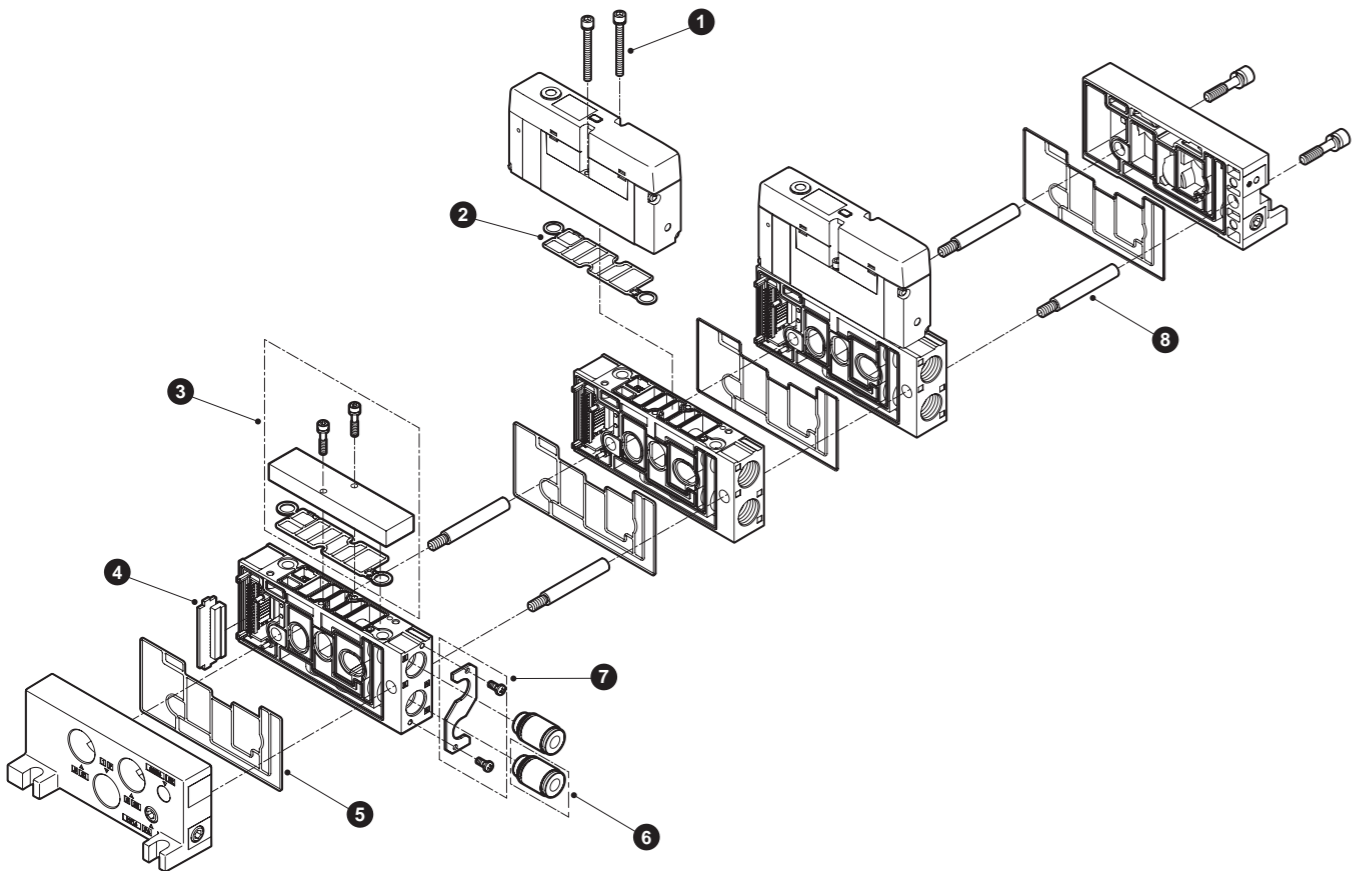


Pilot operated 5-port valve, plug-in block manifold

(M)W4G★4 Series



(M)W4G★4 Series

●Mounting screw

Part model No.	Parts diagram	No.	Qty.
W4G4-SET-SCREW		1	2

●Body gasket

Part model No.	Parts diagram	No.	Qty.
W4G4-GASKET		2	1

●Masking plate kit

Part model No.	Parts diagram	No.	Quantity
W4G4-MP		3	Masking plate: 1 Body gasket: 1 Mounting screw: 4

●Folded base

Part model No.	Parts diagram	No.	Qty.
W4G4-CIRCUIT-BOARD-ED		4	1

●Block gasket

Part model No.	Parts diagram	No.	Qty.
W4G4-BLK-GASKET		5	1

●Cartridge push-in fitting (valve block)

Fitting	Part model No.	Parts diagram	No.	Qty.
ø8	4G4-JOINT-C8		6	1
ø10	4G4-JOINT-C10			
ø12	4G4-JOINT-C12			

●Fitting stopper plate kit

Part model No.	Parts diagram	No.	Qty.
W4G4-JNT-STP-KIT		7	1

●Tie rod

Valve block	Part model No.	Parts diagram	No.	Qty.
For station 1	W4G4-TR-V1		8	2
For station 2	W4G4-TR-V2			
For station 3	W4G4-TR-V3			
For station 4	W4G4-TR-V4			
For station 5	W4G4-TR-V5			
For station 6	W4G4-TR-V6			
For station 7	W4G4-TR-V7			
For station 8	W4G4-TR-V8			