

SCP_D3-V* Series

SCP*3 How to order

No switch (without magnet for switch)

SCPD3-V - **LS** - **10** - **15** - **1** - **I**

With switch (built-in magnet for switch)

SCPD3-VL - **LS** - **10** - **15** - **1** - **T2H** - **R** - **I**

A Model No.

B Mounting

C Bore size

D Stroke

E Valve voltage

F Switch model No.

G Switch quantity

H Option

I Accessory
*3

⚠ Precautions for model No. selection

*1 : Refer to page 70 for the min. stroke with switch.

*2 : Magnet is not built into the without switch.

*3 : "I" and "Y" cannot be selected together.

*4 : Refer to Ending Page 85 for custom specifications of rod end form.

*5 : Refer to page 6 for combination of variations/options.

*6 : For P6 (copper and PTFE free), check the delivery date as it is a made-to-order product.

*7 : Cannot be selected for single acting push (SCPS3).

[Example of model No.]

SCPD3-VL-LS-10-15-1-T2H-R-I

Model: Pencil shaped cylinder

A Model No. : Double acting/with valve and switch

B Mounting : Axial foot (single) (rod side)

C Bore size : ø10 mm

D Stroke : 15 mm

E Valve voltage : 100 VAC

F Switch model No. : Proximity switch T2H, lead wire 1 m

G Switch quantity : 1 on rod side

H Option : None

I Accessory : Rod eye

Code	Description
A Model No.	
SCPS3-V	Single acting push with valve
SCPD3-V	Double acting with valve

B Mounting	
00	Basic
LS	Axial foot (one side)
LB	Two-sided axial foot *7
FA	Rod side flange

C Bore size (mm)	
10	ø10
16	ø16

D Stroke (mm)		
Bore size	Stroke *1	Custom stroke
ø10	15 to 200(120)	In 1 mm increments
ø16	15 to 260(120)	

* The value in () is for SCPS3-V.

E Valve voltage	
1	100 VAC
2	200 VAC
3	24 VDC

F Switch model No.					
Axial lead wire	Radial lead wire	Contact	Voltage		Lead wire
			AC	DC	
T0H*	T0V*	Reed	●	●	1-color LED
T5H*	T5V*		●	●	No indicator lamp
T2H*	T2V*	Proximity		●	1-color LED
T3H*	T3V*			●	3-wire
T2WH*	T2WV*			●	2-color LED
T3WH*	T3WV*			●	3-wire

* Lead wire length	
Blank	1 m (standard)
3	3 m (option)
5	5 m (option)

G Switch quantity	
R	1 on rod side
H	1 on head side
D	2

H Option	
P6	Copper and PTFE free (made-to-order product)

I Accessory	
I	Rod eye
Y	Rod clevis (pin and snap ring included)
B1	Eye bracket
B2	Clevis bracket

How to order mounting bracket

Bore size (mm)	ø10	ø16
Mounting bracket		
Foot (LS)	P2-LS-10	P2-LS-16
Foot (LB)	P2-LB-10	P2-LB-16
Flange (FA)	P2-FA-10	P2-FA-16

Note: The foot (LS) mounting bracket is provided as 1 pc./set.

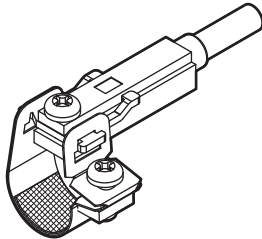
How to order switch

● Switch body + mounting bracket set

SCPD3 - T0H - 6

Bore size
(Item ③ on page 72)

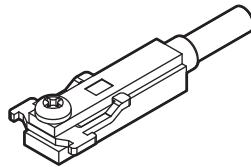
Switch model No.
(Item ⑤ on page 72)



● Switch body (with fixing bracket)

SCPD3 - T0H

Switch model No.
(Item ⑤ on page 72)

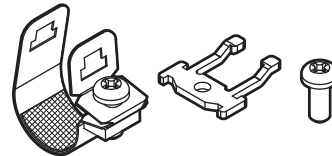


Note) The fixing bracket and cross-recessed pan head machine screw are different from those for the T type standard switch.

● Mounting bracket set + fixing bracket

SCPD3 - TS - 6

Bore size
(Item ③ on page 72)

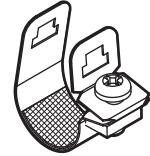


When 20 pcs or more are ordered, they will be packed together.

● Mounting bracket set

SCPD3 - T - 6

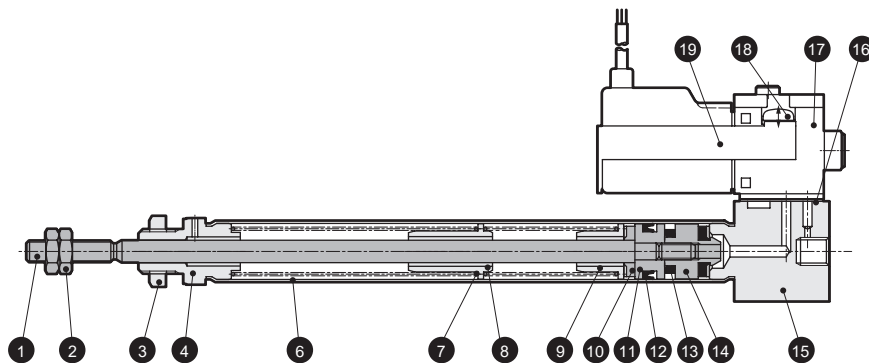
Bore size
(Item ③ on page 72)



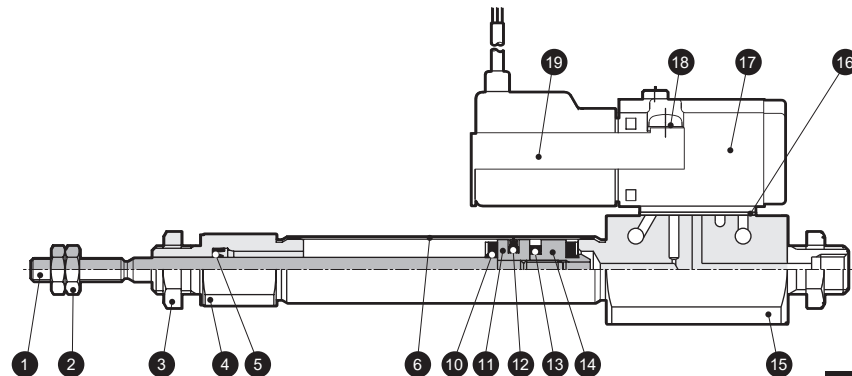
When 20 pcs or more are ordered, they will be packed together.

Internal structure and parts list (with switch)

● SCPS3-VL



● SCPD3-VL



Cannot be disassembled

* This product is caulked and cannot be disassembled.

No.	Part name	Material	Remarks	No.	Part name	Material	Remarks
1	Piston rod	Stainless steel		11	Piston	Aluminum alloy	
2	Rod nut	Steel	Nickeling	12	Piston packing	Nitrile rubber	
3	Hexagon nut	Steel	Nickeling	13	Magnet	-	With switch only
4	Rod cover	Aluminum alloy	Hard alumite	14	Spacer	Aluminum alloy	
5	Rod packing	Nitrile rubber		15	Head cover	Aluminum alloy	Hard alumite
6	Cylinder tube	Stainless steel		16	Gasket	Nitrile rubber	
7	Spring	Piano wire	Zinc chromate	17	Solenoid valve	-	3-way valve - single acting, 4-way valve - double acting
8	Collar	Aluminum alloy		18	Pan head machine screw	Steel	Zinc chromate
9	Spring holder	Aluminum alloy		19	Shielding plate	Steel	With switch only
10	Cushion rubber	Urethane rubber					