

SCP^SD3-M Series

SCP*3

How to order

No switch (without magnet for switch)

SCPD3-M - LS - 10 - 15 - O - I

With switch (built-in magnet for switch)

SCPD3-ML - LS - 10 - 15 - O - T2H - R - I

A Model No.

B Mounting

C Bore size

D Stroke

E Head side port direction
*3

F Switch model No.
*2, *6
* indicates the lead wire length.

G Switch quantity

H Accessory
*4

! Precautions for model No. selection

- *1 : Refer to page 56 for the min. stroke with switch.
- *2 : Magnet is not built into the type without switch.
- *3 : The "CB" mounting is not available when the port direction is "O" (axial direction).
- *4 : "I" and "Y" cannot be selected together.
- *5 : Copper and PTFE free as standard.
- *6 : Switches are shipped with the product.

[Example of model No.]

SCPS3-ML-LS-10-15-O-T2H-R-I

Model: Pencil shaped cylinder rotation-stop

- A** Model No. : Single acting/push rotation-stop
- B** Mounting : Axial foot (single) (rod side)
- C** Bore size : ø10 mm
- D** Stroke : 15 mm
- E** Head side port direction: Axial direction
- F** Switch model No. : Proximity switch T2H, lead wire 1 m
- G** Switch quantity : 1 on rod side
- H** Accessory : Rod eye

How to order mounting bracket

Bore size (mm)	ø10	ø16
Mounting bracket		
Foot (LS)	P2-LS-10M	P2-LS-16M
Flange (FA)	P2-FA-10M	P2-FA-16M

Note: The foot (LS) mounting bracket is provided as 1 pc./set.

Code	Description
A Model No.	
SCPS3-M	Single acting push/rotation-stop
SCPD3-M	Double acting/rotation-stop

B Mounting	
00	Basic
LS	Axial foot (one side) (rod side)
FA	Rod side flange
CB	Clevis bracket (pin and snap ring included)

C Bore size (mm)	
10	ø10
16	ø16

D Stroke (mm)			
Bore size	Stroke *1	Available Stroke	Custom stroke
ø10	5 to 200 (120)	210(120)	In 1 mm increments
ø16	5 to 260 (120)	270(120)	
* The value in () is for SCPS3-M.			

E Head side port direction	
Blank	Vertical
O	Axial direction

F Switch model No.						
Axial lead wire	Radial lead wire	Contact	Voltage		Indicator	Lead wire
			AC	DC		
T0H*	T0V*	Reed	●	●	1-color LED	2-wire
T5H*	T5V*		●	●	No indicator lamp	
T2H*	T2V*	Proximity		●	1-color LED	2-wire
T3H*	T3V*			●	LED	3-wire
T2WH*	T2WV*			●	2-color LED	2-wire
T3WH*	T3WV*			●	LED	3-wire

* Lead wire length	
Blank	1 m (standard)
3	3 m (option)
5	5 m (option)

G Switch quantity	
R	1 on rod side
H	1 on head side
D	2
T	3

H Accessory	
I	Rod eye
Y	Rod clevis (pin and snap ring included)
B1	Eye bracket
B2	Clevis bracket

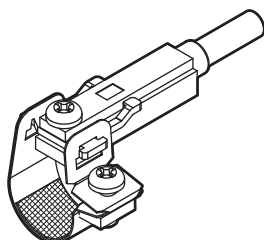
How to order switch

- Switch body + mounting bracket set

SCPD3 - T0H - 6

Bore size
(Item ③ on page 58)

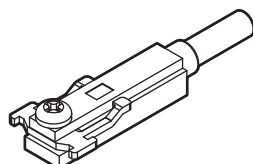
Switch model No.
(Item ⑤ on page 58)



- Switch body (with fixing bracket)

SCPD3 - T0H

Switch model No.
(Item ⑤ on page 58)

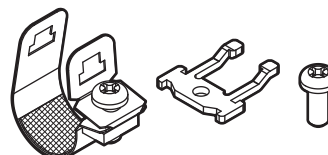


Note) The fixing bracket and cross-recessed pan head machine screw are different from those for the T standard switch.

- Mounting bracket set + fixing bracket

SCPD3 - TS - 6

Bore size
(Item ③ on page 58)

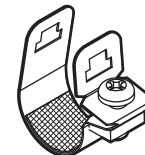


When 20 pcs or more are ordered, they will be packed together.

- Mounting bracket set

SCPD3 - T - 6

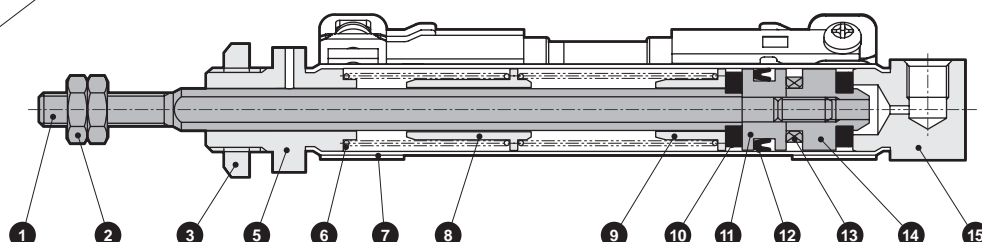
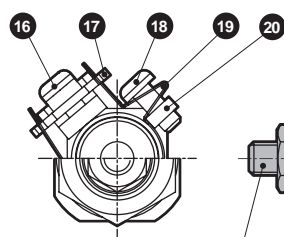
Bore size
(Item ③ on page 58)



When 20 pcs or more are ordered, they will be packed together.

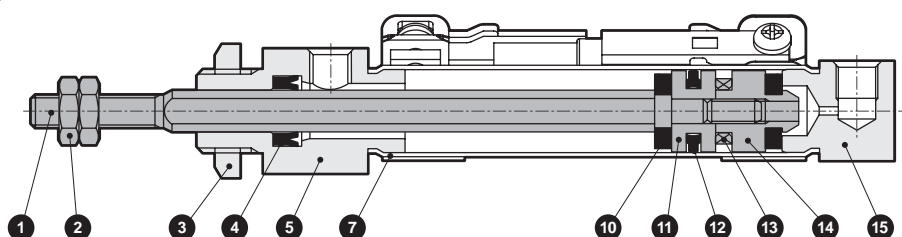
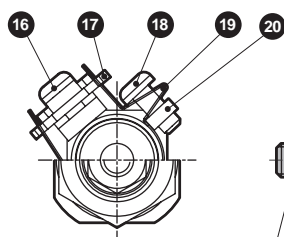
Internal structure and parts list

- Single acting/rotation-stop
SCPS3-M
SCPS3-ML (with switch)



Cannot be disassembled

- Double acting/rotation-stop
SCPD3-M
SCPD3-ML (with switch)



- This product cannot be disassembled.

No.	Part name	Material	Remarks	No.	Part name	Material	Remarks
1	Piston rod	Stainless steel		11	Piston	Aluminum alloy	
2	Rod nut	Steel	Nickeling	12	Piston packing	Nitrile rubber	
3	Hexagon nut	Steel	Nickeling	13	Magnet	-	With switch only
4	Rod packing	Nitrile rubber		14	Spacer	Aluminum alloy	
5	Rod cover	Aluminum alloy	Hard alumite	15	Head cover	Aluminum alloy	Hard alumite
6	Coil spring	Piano wire	Zinc chromate	16	Phillips pan head machine screw	Stainless steel	With switch only
7	Cylinder tube	Stainless steel		17	Fixing bracket	Stainless steel	With switch only
8	Spring holder (A)	Aluminum alloy		18	Phillips pan head machine screw	Stainless steel	With switch only
9	Spring holder (B)	Aluminum alloy		19	Band	Stainless steel	With switch only
10	Cushion rubber	Urethane rubber		20	Fixing nut	Stainless steel	With switch only