

Odette height adjustable desk frame
BBS35TF-DC2R



Data Sheet

BBS35TF-DC2R

- BBS35TF-DC2R is an innovative electric adjustable desk frame, which can be widely used at home, office and commercial environments.
- Minimalist aesthetics, elaborate design, innovative modeling to match different application scenarios.
- Lifting system structure is simple, embedded hand set easy to control the lifting.
- Four legs synchronous stability, equipped with sensitive anti-collision function, safe lifting.



Features

- Load: 1000N
- Self-lock: 1000N
- Maximum speed no load ~ rated load: 32mm/s
- Low noise: ≤53dB
- Frame size: 1800X800mm(Do not stretch)
- Height Range: 700- 1150mm
- Surface: powder-coating, standard colors: white, black, silver

Option

- Customized colors are acceptable

BBS35TF-DC2R

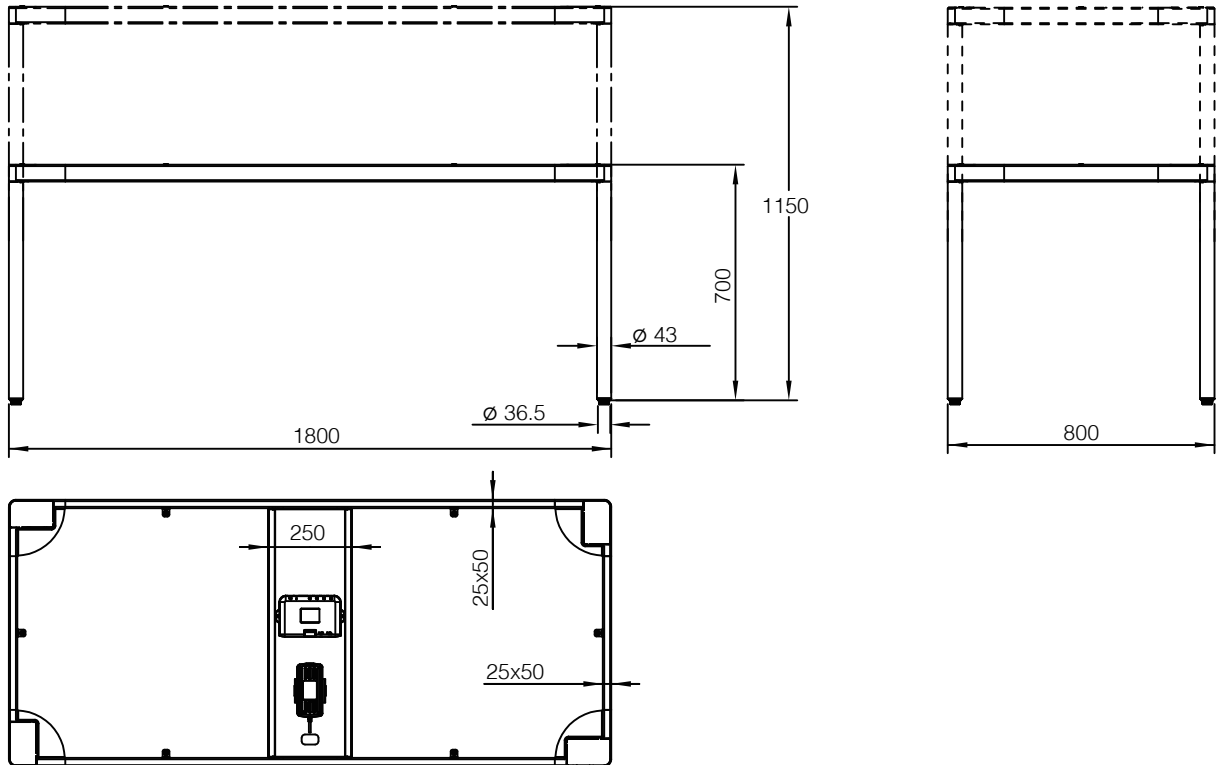
Usages

- Matching: BIBUS embedded desktop handset; BBS36M4 control box; Desktop of 1800X800mm
- Duty cycle: 20%; 2 minutes continuous use followed by 18 minutes not in use
- Usage environment: Indoor
- Ambient temperature: -10°C~70°C

Technical specifications

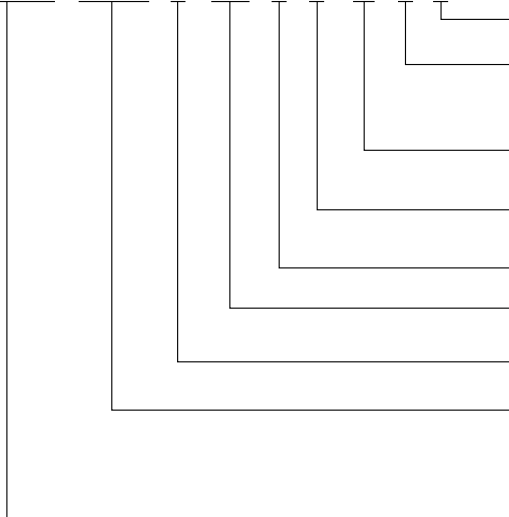
Model	Load (N)	Self-lock (N)	Rated load current (A)	Maximum speed no load ~ rated load (mm/s)	Duty cycle	Stroke (mm)	Min. height (mm)
BBS35TF-DC2R	1000	1000	4	32	20%	450	700

Dimensions



Ordering Key

BBS35TF-DC2R-0-152-0-H-15-0-0



Special specification of column

Optional function

01=column with welding plates,
equipped with horizontal beam
02=desktop

Leveling stand code

15=Small foot glide
02=ET leveling stand

Color code

H=white
B=Black
S=silver

Side bracket code

107=BBS36DR1Side panel

Frame code

152=TF frame
154=Bending frame

Table foot code

186=embedded reinforced desk foot
146=flat desk foot

Column code

DC2R=inverted pipe columns of
2-segments
R13S=rectangular pipe columns of
3-segments

Lifting desk series code

JC35TS=2 columns
JC35TT=3 columns
JC35TF=4 columns